



Samsung Chromebook 2 Battery Replacement

How to replace a battery in a Samsung Chromebook 2, Model: EX503C12. This guide also works for Model EX500C12.

Written By: Zack McCauley



INTRODUCTION

This guide will help you replace the battery in a Samsung Chromebook 2.



TOOLS:

- [Spudger](#) (1)
- [1 x PH0 screw bit](#) (1)
- [Anti-Static Wrist Strap](#) (1)



PARTS:

- [Replacement Battery for Samsung Chromebook](#) (1)


Step 1 — Remove the screws to the Outer Case



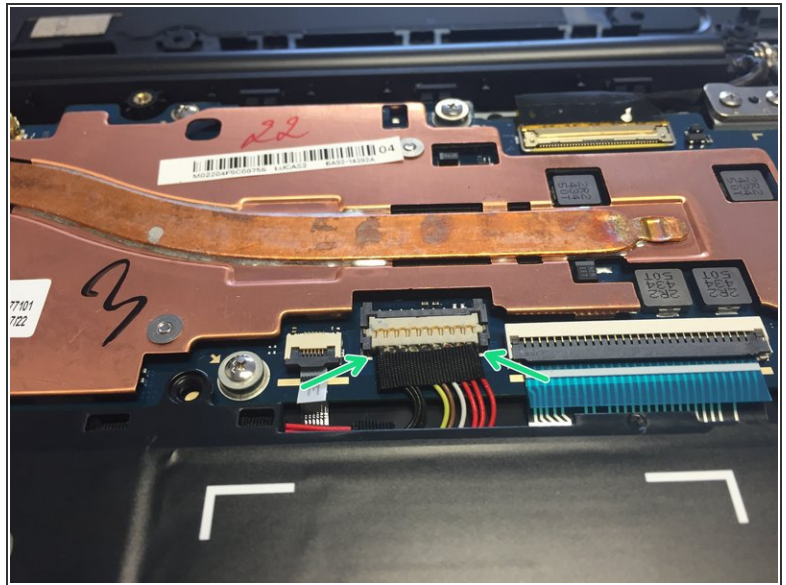
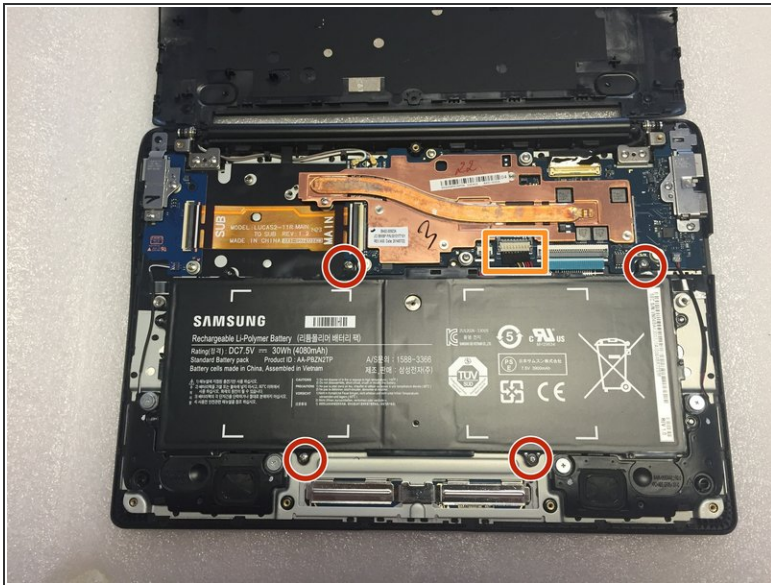
- Using a PH0 bit, remove all 9 screws from the edges of the case.

Step 2 — Opening the Case



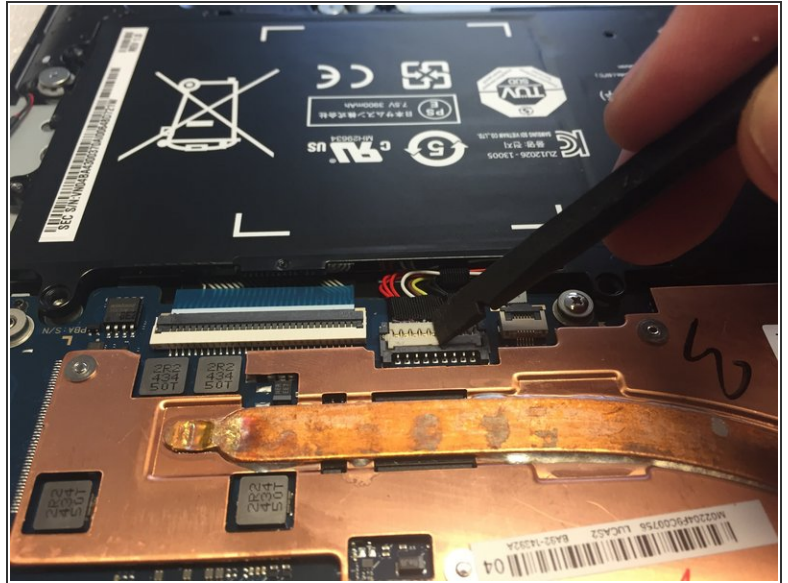
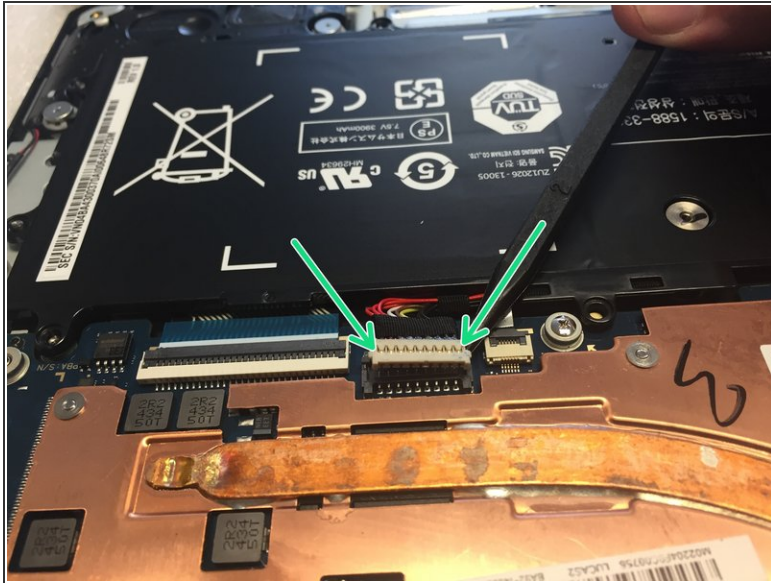
- Open the MicroSD Card Reader door. It will assist when opening the case as there is a snap point directly beside this door.
 - Starting from the corner, slide your spudger down and in at a steep angle. You will hear a click as the snap loosens. Slid the spudger inside the case and turn 90° to the left or the right to release the snap.
 - Begin by slowly working your way around the case. If you come across a section that does not release as easy, leave it and go the opposite direction around the case. Eventually the pressure will release and the back case will pop off.
-  You can use the back casing as a screw tray for the battery, so keep it close.

Step 3 — Disconnecting the Battery



- ⚠ Make sure you are wearing an anti static wrist strap, or make sure you are grounded. You are working close to the logic board, you do not want to cause static discharge damage!
- Using your spudger, easily pry the battery cable from the connector. You may hear a click, this is normal. There are two snap in spots that keep the cable fastened tightly to the board.
- ⓘ I found it easier to slide the spudger under the side of the cable and lift gently. It only lifts a little of the cable at a time. I then moved the spudger to the other side of the cable and repeated. It gently disconnects from it's connector this way. (shown in picture 2)
- Unscrew the four screws with your PH0 bit. Set them inside the case piece as it should prevent the screws from rolling around.
- Once the battery is free, life the edge with the spudger and gently life the battery out of the chromebook.

Step 4 — Replacing the Battery



- Put the new battery over the holding posts and gently put the cable onto the connector. Gently push on one side at a time as there are two clasps that keep the cable connected. You will hear two clicks when the cable is seated correctly.
- Take the flat part of your spudger and carefully verify the cable is fully seated.
- Once the cable is seated, put the four screws back in. This will secure the battery.
- ❗ Put the screws in loosely until all four are in place before tightening them down.

To reassemble your device, place the back casing in its correct orientation. Apply gentle pressure around the edges until you hear no more clicks. Put all nine screws back in and tighten down.